



RACECOURSE  
MARINA & LODGES  
WINDSOR



REGISTER YOUR INTEREST

**THE DORNEY LODGE - Plot 34**

 2 bed  2 bath  92 sq m

**FROM £450,000**

**PHONE:** +44 (0) 1753 910750

**WEB:** [www.racecoursemarina.com](http://www.racecoursemarina.com)

**EMAIL:** [info@racecoursemarina.com](mailto:info@racecoursemarina.com)



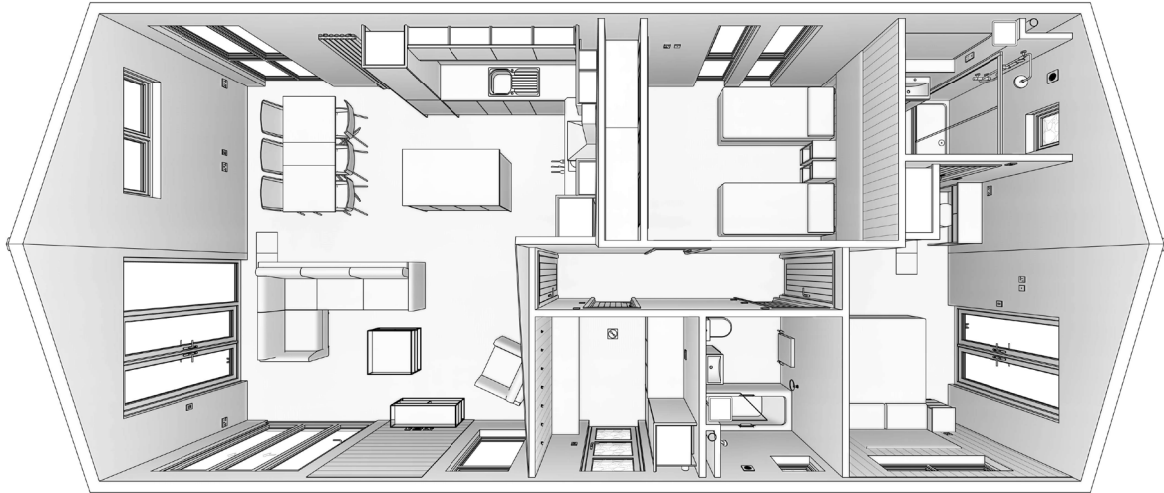
The Dorney Lodge on Plot 34 is a charming and beautifully considered lodge, where soft earthy tones and a blend of contemporary and traditional finishes create a space that feels instantly like home.

The generous open-plan living area benefits from vaulted ceilings and French doors that fill the room with natural light, while the well-equipped shaker-style kitchen centres around a large island breakfast bar, perfect for relaxed mornings or entertaining friends and family.



The king-sized master bedroom is a calm, private retreat complete with built-in wardrobes, dressing table and en-suite shower room. A second twin bedroom and family bathroom with full bath ensure guests are equally well looked after.

# DORNEY LODGE FLOOR PLAN



92 sq m



## LUX APPLIANCES

stylish and functional



## FAST WI-FI

providing wireless control



## DECKED TERRACE

complete with balustrade



## PARKING PLACES

for up to two vehicles



## DOUBLE GLAZED

for your comfort



## IDYLLIC VIEWS

along the marina



## LOCAL AMENITIES

with easy access



## OPEN PLAN

built to be exclusive

### DISCLAIMER

This brochure (the description, images and measurements herein) do not form any part of a contract. Whilst every effort has been made to ensure accuracy, this cannot be guaranteed. Site maps and floor plans contained within this brochure are not to scale and are subject to change. The information and imagery contained in this brochure is for guidance purposes only and does not constitute a contract, part of a contract or warranty. Racecourse Marina and Lodges, Maidenhead Road, Windsor SL4 5HT



**RACECOURSE  
MARINA & LODGES**  
WINDSOR